

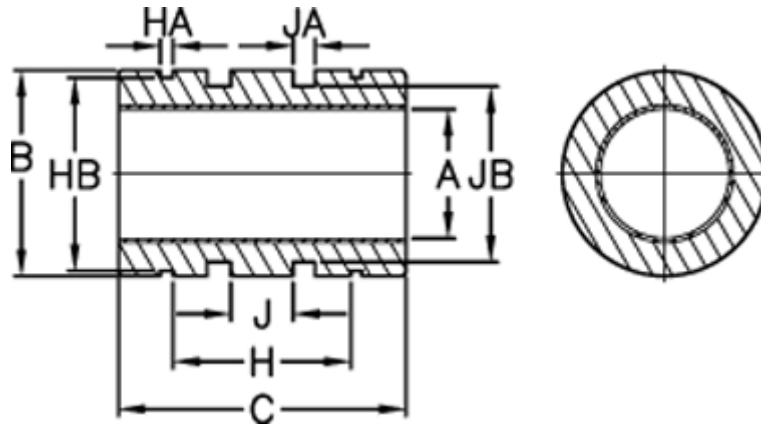
Data Sheet



Article number: 50100163

Description: Standard bearing FMC 16 E

Measures



A max	= 16.093	For o-ring	= 21,5 x 2,5	Static load (kg)	= 6
A min	= 16.065999999999999	H	= 22	Surface area kcm	= 5
B max	= 26	HA	= 1.32		
B min	= 25.978999999999999	HB	= 24.9		
Bush weight kg	= 0.028	J	= 8		
C max	= 36	JA	= 3.17		
C min	= 35.746000000000002	JB	= 21.9		
Concentric mm	= 0.0254	Ret ring part no (DIN 471)	= 26		